

COMMERCIAL

PRODUCT GUIDE

2023

16^{PR}

16 Ply Rating

GT Radial Commercial Truck Tires feature rugged 16 ply construction for load capacity and durability (most sizes).

72^{MO}

Limited Warranty

GT Radial Commercial Truck Tires are covered by a 72 Month Warranty & Casing Warranty.



SmartWay Verified

Giti Tire Manufactures SmartWay Verified Technologies.
Learn more at epa.gov/smartway



WORLD CLASS TECHNOLOGY & QUALITY	4
SOCIAL RESPONSIBILITY	6
TECHNOLOGY	7
PRODUCT LINE	8
COMPARISON CHART	10

CROSS REGIONAL

GSR135^{FE}	15
GDR335^{FE}	16
GDR668	18
GTR750^{FE}	20
GTR955	22

CROSS URBAN

GSR139	26
GAM535	28
GAM876	30
GDR339	32

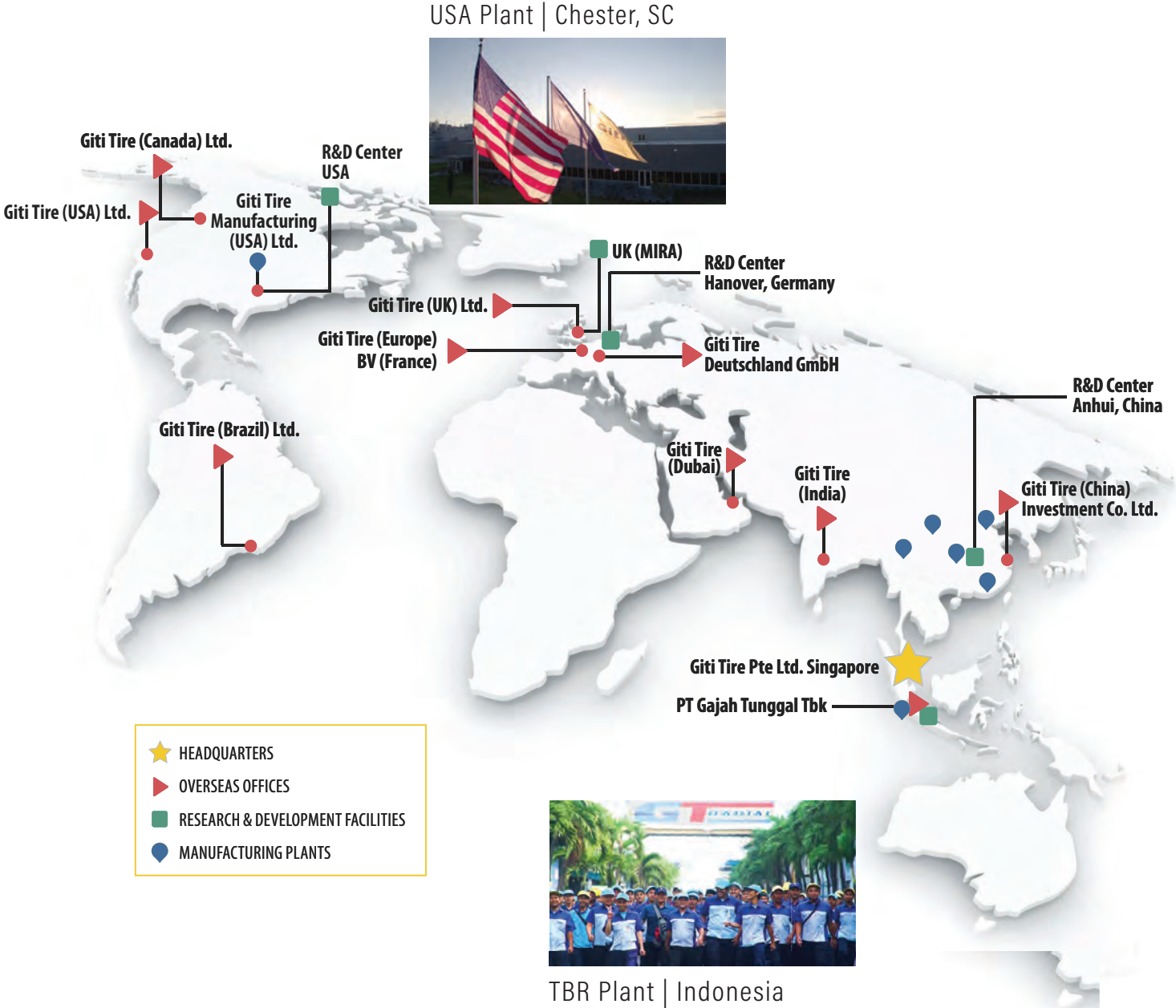
ULTRA WIDE

GDL633FS	36
GTL933FS	37

TECHNICAL DATA & RESOURCES

PRODUCT NOMENCLATURE	39
DESIGNATIONS, LOAD INDEX & SPEED RATING	40
TIRE PRESSURE MANAGEMENT	41
RECOMMENDED LOAD & INFLATION TABLE	42
LIMITED WARRANTY	44
LIMITED CASING WARRANTY	47

World Class Technology & Quality



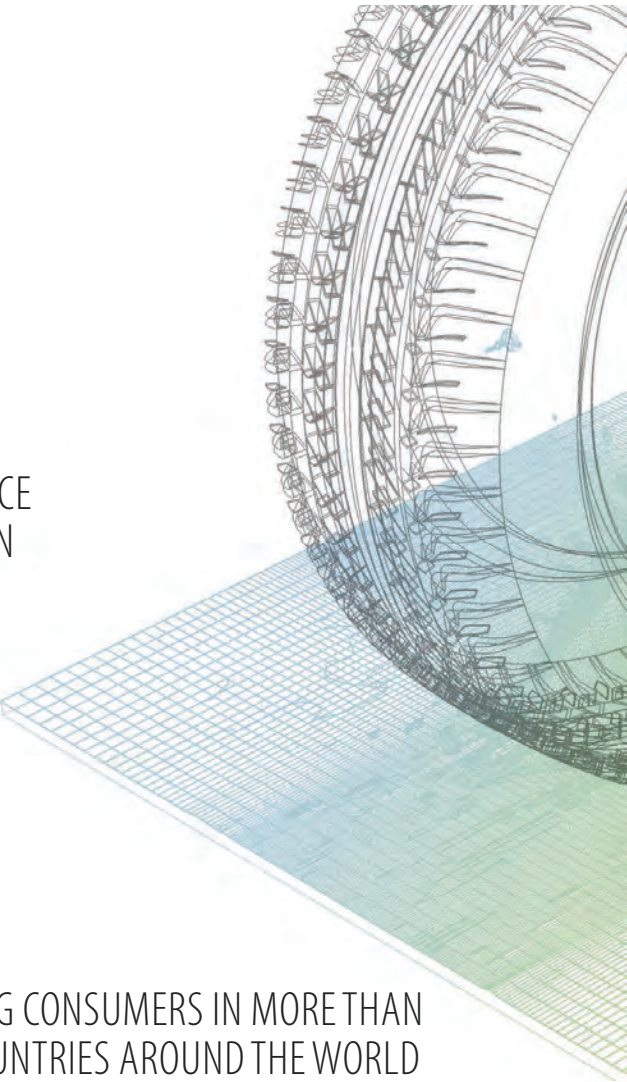
33,000 OVER 33,000 EMPLOYEES FROM 20 DIFFERENT COUNTRIES

50 OUR DIVERSE WORKFORCE REPRESENTS MORE THAN 50 NATIONALITIES

130+ SERVING CONSUMERIG CONSUMERS IN MORE THAN 130 COUNTRIES ARO/UNTIES AROUND THE WORLD

8 EIGHT WORLD CLASS MANUFACTURING FACILITIES IN THE UNITED STATES, CHINA AND INDONESIA

5 R&D TECHNICAL CENTERS IN THE UK, USA, GERMANY, CHINA AND INDONESIA

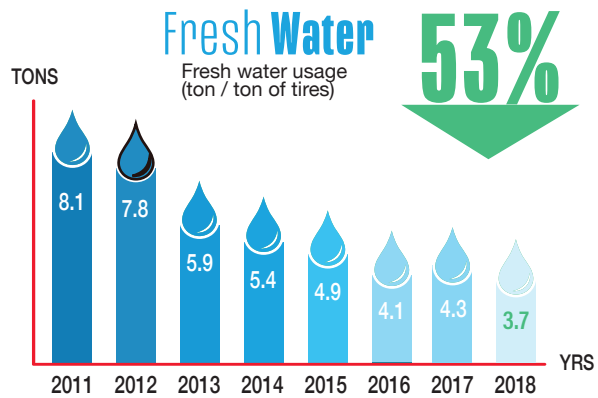


Social Responsibility

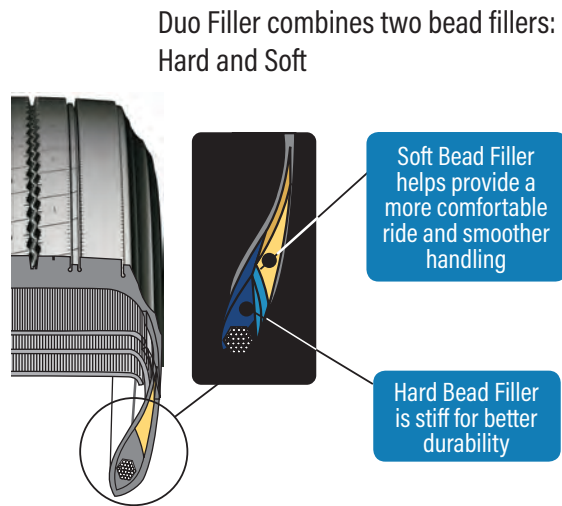
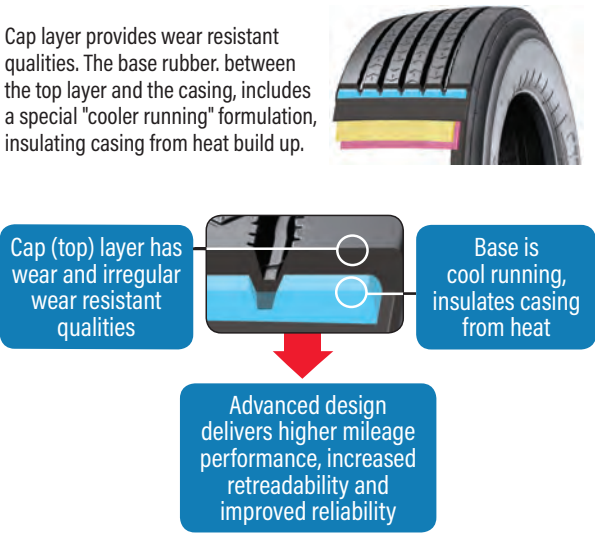
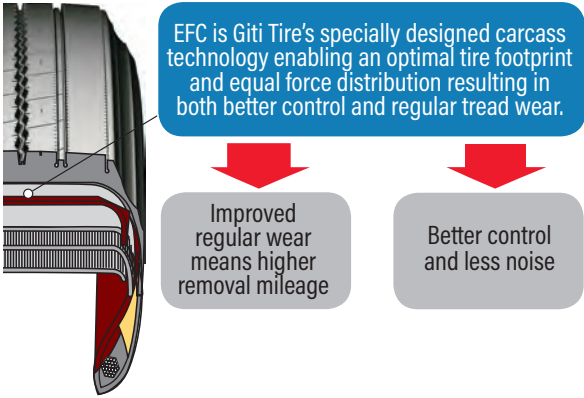
Sustainability Initiatives

Dedicated to the green principles of environmental protection, GT Radial is committed to the development of sustainable, energy-saving technologies and products.

More importantly, we place special emphasis on the tire manufacturing process and strive to minimize the environmental impact of tire products by reducing emissions, wastewater and waste materials.



Technology





GSR 135^{FE}
11R22.5 (16PR)
295/75R22.5 (16PR)
255/70R22.5 (16PR)
11R24.5 (16PR)
285/75R24.5 (16PR)



GSR 139
225/70R19.5 (14PR)
245/70R19.5 (16PR)



GAM 535
11R22.5 (16PR)
315/80R22.5 (22PR)
11R24.5 (16PR)



GAM 876
385/65R22.5 (18PR)
425/65R22.5 (20PR)



GSR 135^{FE*}
11R22.5 (16PR)
255/70R22.5 (16PR)
295/75R22.5 (16PR)
11R24.5 (16PR)
285/75R24.5 (16PR)



GDR 335^{FE}
11R22.5 (16PR)
295/75R22.5 (16PR)
11R24.5 (16PR)
285/75R24.5 (16PR)



GDR 668
11R22.5 (16PR)
295/75R22.5 (16PR)
11R24.5 (16PR)
285/75R24.5 (16PR)



GDL 633 FS
445/50R22.5 (20PR)



GDR 339
225/70R19.5 (14PR)
245/70R19.5 (16PR)



GAM 535
11R22.5 (16PR)
315/80R22.5 (22PR)
11R24.5 (16PR)



GAM 876
385/65R22.5 (18PR)
425/65R22.5 (20PR)



GSR 139*
225/70R19.5 (14PR)
245/70R19.5 (16PR)



GSR 135^{FE*}
11R22.5 (16PR)
255/70R22.5 (16PR)
295/75R22.5 (16PR)
11R24.5 (16PR)
285/75R24.5 (16PR)



GTR 750^{FE}
11R22.5 (16PR)
295/75R22.5 (16PR)
255/70R22.5 (16PR)
11R24.5 (16PR)



GTR 955
215/75R17.5 (16PR)
235/75R17.5 (16PR)



GTL 933 FS
445/50R22.5 (20PR)



GAM 535
11R22.5 (16PR)
315/80R22.5 (22PR)
11R24.5 (16PR)



GAM 876
385/65R22.5 (18PR)
425/65R22.5 (20PR)



*Recommended for steer position, also applicable for drive and/or trailer positions

Comparison Chart








CROSS REGIONAL





						
	GSR 135 ^{FE}	GDR335 ^{FE}	GDR668	GTR750 ^{FE}	GTR955	
	Steer	All Position*	Drive	Drive	Trailer	All Position
MICHELIN	XZA3+ XZE2	X INCITY 2 XZE2+	XDA 5+	XDE2 XDN2	XT1	XZE2
BRIDGESTONE	R283 Ecopia R268	R268 R250F	M726EL	M770 M760	R197 Ecopia	R260F R268
GOODYEAR	G399 LHS G661	G652 G661	G572	G182RSD G137	G316 LHT FuelMax	G169 G661
CONTINENTAL	HSL2 Eco Plus HSR2	Urban HA3 HSR, HSR-1	HDR2	HDR1 HDW2	HTL Eco Plus pm	HSR2
YOKOHAMA	101ZL 104ZR	04ZR 104ZR	TY577	— SY767	RY587 MC2	103ZR
TOYO	M147 M144	M144 M143	M657	M610ZL —	M157	M154
BF GOODRICH	ST244 ST230	ST230	DR444	DR424 —	DR444	ST230
FIRESTONE	FS591 FS560	FS400 FS560	FD690 +	FD690 —	FT455 Plus	FS560
GENERAL	S581 RA	RA	D460	D445 —	ST250	S360
HANKOOK	AL11, AL07+ AH12	AH12 AH12	DL07	DH06 DL12	TL01	AH24 AH12
KUMHO	KSL02e RM185HH	KRS03	—	—	KTL02e	HKRS02
ROADMASTER	RM180 RT606+	RM234 RM185	RM852	RM254	RM871	RM185
DOUBLE COIN	RR300 HN257	RR680 RT600	RLB400	RLB450 RSD3	TR100 FT105	RT606+
AEOLUS	HN277 Ultra HN06	— ASR65	HN377	HN357 HN355	HN808	HN06

CROSS REGIONAL





CROSS URBAN

					
	GSR 139	GAM535	GAM876	GDR339	
	All Position*	All Position	All Position	Drive	
MICHELIN	XZE2	XZY3	XZY3 WB	XDS2	
BRIDGESTONE	R260F	M860A M843	M844F	M724F	
GOODYEAR	G169 G661	G288MSA	G296MSA	G622 RSD	
CONTINENTAL	HSR2 Eco Plus HSR2	HSC1	HTC1	HDR1	
YOKOHAMA	103ZR	HSC1	HTC1	TY303	
TOYO	M154	M320Z	M320Z	M608Z M605Z	
BF GOODRICH	ST230	ST576	ST565 WB	—	
FIRESTONE	FS560	T819	T839	FD690	
GENERAL	S371 S360	Grabber OA	Grabber OA WB	LMT450	
HANKOOK	AH24 AH12	AM06	AM02	DH01	
KUMHO	KRS02	KMA01	KMA02	—	
ROADMASTER	RM185	RM239	RM230 WB	RM253	
DOUBLE COIN	RT606+	RR4	RLB900+	RLB450	
AEOLUS	HN06	HN08	HN228	HN309	

CROSS URBAN



ULTRA WIDE

ULTRA WIDE



CROSS REGIONAL

Engineered to provide optimized tread wear for combined Regional and Long Haul operations, including SmartWay verified tires.

- ▶ COMBINED USAGE WITH REGIONAL & LONG HAUL TO BETTER FIT CURRENT DELIVERY REQUIREMENTS
- ▶ 70-80% ON HIGHWAYS, 20-30% ON REGIONAL ROADS

GSR135^{FE}

CROSS REGIONAL STEER / ALL POSITION



Cross Regional



Steer / All Position



SmartWay Verified

72^{Mo}

Limited Warranty*

*See GTRadialCommercial.com for details



Tire Size	11R22.5	295/75R22.5	255/70R22.5	11R24.5	285/75R24.5
Item Code	EV99915G	EV99917G	EV99879G	EV99889G	EV99877G
PR	16	16	16	16	16
LR	H	H	H	H	H
LI/SR	146/143 L	146/143 L	140/137 L	149/146 L	147/144 L
Approved Wheel	8.25	9	7.5	8.25	8.25
Allowed Wheel	7.5	8.25	8.25	7.5	9
Max Load Single (LBS)	6,610@120	6,610@120	5,510@120	7,160@120	6,780@120
Max Load Dual (LBS)	6,005@120	6,005@120	5,070@120	6,610@120	6,175@120
Max Pressure (PSI)	120/120	120/120	120/120	120/120	120/120
Tread Depth (32nds)	19	19	18	19	19
Weight (LBS)	113	111	93	124	119

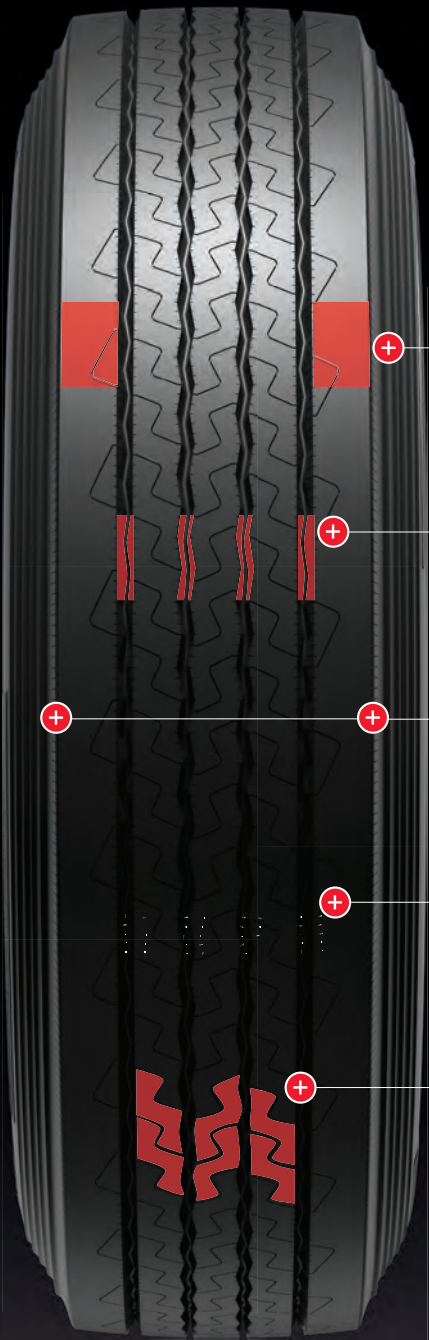
PR Ply Rating LR Load Range LI Load Index SR Speed Rating
Specifications and availability subject to change without notice.

**Factory Direct Container

The **GT Radial GSR135FE** is a “NOW generation” STEER / ALL POSITION tire from Giti Tire. A solid shoulder design with tread compounds engineered to be tough enough for local streets while delivering wear, fuel efficiency and cost per mile performance for cross regional hauls.

SmartWay verified. Retreadable, with warranty. Affordable performance.

FEATURES / BENEFITS



Wider Shoulder Ratio Design

Increased shoulder rigidity provides lateral force resistance for improved handling

Four Zigzag Longitudinal Groove Design

Excellent highway traction and driving stability

Optimized Tread Compound

High wear resistance and reduced rolling resistance

Treadblock Edge Sipes

Distribute and disperse road stress to help ensure uniform treadwear

“S” Section Sipes

Maximize tread edges for enhanced grip and wet performance

GDR335^{FE}

CROSS REGIONAL DRIVE



Cross Regional



Drive Position



SmartWay Verified

72^{Mo}

Limited Warranty*

*See GTRadialCommercial.com for details



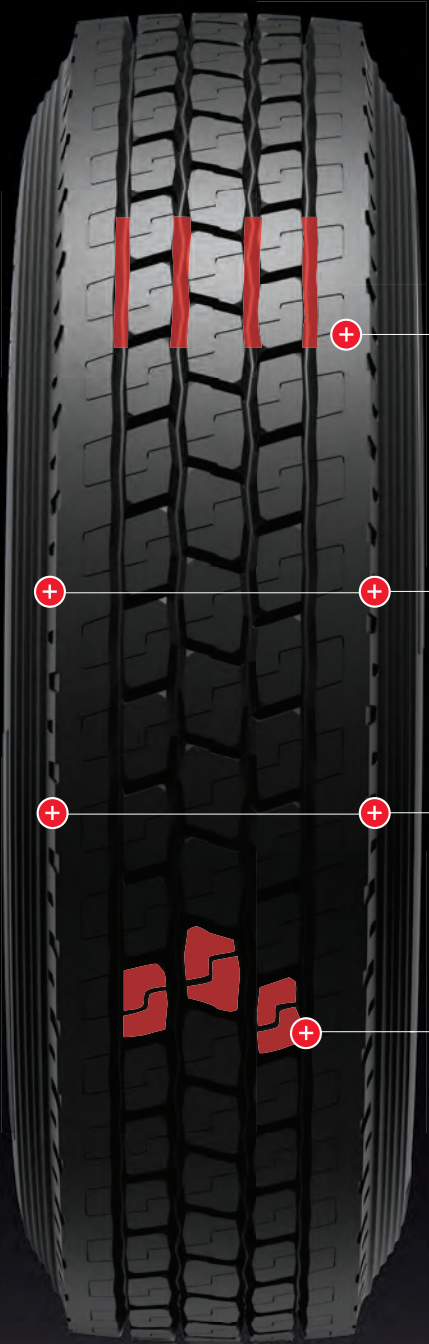
Tire Size	11R22.5	295/75R22.5	11R24.5	285/75R24.5
Item Code	EV999146	EV999166	EV998886	EV998766
PR	16	16	16	16
LR	H	H	H	H
LI/SR	146/143 L	146/143 L	149/146 L	147/144 L
Approved Wheel	8.25	9	8.25	8.25
Allowed Wheel	7.5	8.25	7.5	9
Max Load Single (LBS)	6,610@120	6,610@120	7,160@120	6,780@120
Max Load Dual (LBS)	6,005@120	6,005@120	6,610@120	6,175@120
Max Pressure (PSI)	120/120	120/120	120/120	120/120
Tread Depth (32nds)	26	26	26	26
Weight (LBS)	124	118	131	126

PR Ply Rating LR Load Range LI Load Index SR Speed Rating
Specifications and availability subject to change without notice.

**Factory Direct Container

The **GT Radial GDR335FE** is a “NOW generation” DRIVE tire from Giti Tire. A solid shoulder design with tread compounds engineered to be tough enough for local streets while delivering wear, fuel efficiency and cost per mile performance for cross regional hauls.

SmartWay verified. Retreadable, with warranty. Affordable performance.



FEATURES / BENEFITS

Serrated Longitudinal Four Groove Design

Excellent highway traction, driving stability and water evacuation

New Fuel Saving Compound

Reduced rolling resistance and heat generation, for improved fuel economy and wear resistance

Closed Notched Shoulder Design

Enhanced heat dissipation helps provide longer mileage and minimizes irregular shoulder wear

Aggressive Block Design with Deep Transverse Grooves and Sipes

Improved braking performance and wet traction, enhanced tread life

GDR668

CROSS REGIONAL DRIVE



Cross Regional



Drive Position

72Mo

Limited Warranty*

*See GTRadialCommercial.com for details



Tire Size	11R22.5	295/75R22.5	11R24.5	285/75R24.5
Item Code	EV999336	EV911996	EV999266	EV998826
PR	16	16	16	16
LR	H	H	H	H
LI/SR	146/143 L	146/143 L	149/146 L	147/144 L
Approved Wheel	8.25	9	8.25	8.25
Allowed Wheel	7.5	8.25	7.5	9
Max Load Single (LBS)	6,610@120	6,610@120	7,160@120	6,780@120
Max Load Dual (LBS)	6,005@120	6,005@120	6,610@120	6,175@120
Max Pressure (PSI)	120/120	120/120	120/120	120/120
Tread Depth (32nds)	28	28	28	28
Weight (LBS)	121	126	130	127

PR Ply Rating LR Load Range LI Load Index SR Speed Rating
Specifications and availability subject to change without notice.

The **GT Radial GDR668** is an all new open shoulder DRIVE tire from Giti Tire, developed to minimize irregular wear and offer excellent retreadability, and designed for regional or long haul applications.

Retreadable, with warranty.
Affordable performance.

FEATURES / BENEFITS

Open Shoulder Design
Excellent traction in wet and dry, with increased heat dissipation for endurance

Deep and Wide Tread Design
Reduced rolling resistance and heat generation, for improved fuel economy and wear resistance

Staggered Block and Lug Pattern
Effective and consistent traction and braking performance

Open Lug Design
Effectively prevents occurrence of “heel and toe” irregular wear

GTR750^{FE}

CROSS REGIONAL TRAILER



Cross Regional



Trailer Position



SmartWay Verified

72^{Mo}

Limited Warranty*

*See GTRadialCommercial.com for details



Tire Size	11R22.5	295/75R22.5	255/70R22.5	11R24.5
Item Code	EV999056	EV999066	EV998786	EV998876
PR	16	16	16	16
LR	H	H	H	H
LI/SR	146/143 L	146/143 L	140/137 L	149/146 L
Approved Wheel	8.25	9	7.5	8.25
Allowed Wheel	7.5	8.25	8.25	7.5
Max Load Single (LBS)	6,610@120	6,610@120	5,510@120	7,160@120
Max Load Dual (LBS)	6,005@120	6,005@120	5,070@120	6,610@120
Max Pressure (PSI)	120/120	120/120	120/120	120/120
Tread Depth (32nds)	13	13	13	13
Weight (LBS)	107	102	85	115

PR Ply Rating LR Load Range LI Load Index SR Speed Rating
Specifications and availability subject to change without notice.

**Factory Direct Container

The **GT Radial GTR750FE** is a durable new shallow tread TRAILER tire from Giti Tire, developed to minimize irregular wear and offer excellent retreadability, designed for cross regional applications.

SmartWay verified. Retreadable, with warranty. Affordable performance.

FEATURES / BENEFITS



Fuel Saving Compound

Low rolling resistance for increased fuel economy

Five Streamlined Circumferential Ribs

Balanced distribution of contact pressure for consistent treadwear

Four Longitudinal Groove Design

Efficient water evacuation for enhanced wet traction

Shallow Tread Depth

13/32nds tread depth to minimize irregular treadwear

GTR955

CROSS REGIONAL TRAILER



Cross Regional



Trailer Position

72Mo

Limited Warranty*

*See GTRadialCommercial.com for details



Tire Size	215/75R17.5	235/75R17.5
Item Code	EV99901G	EV99903G
PR	16	16
LR	H	H
LI/SR	136/134 K	143/141 (146/146) K(F)
Approved Wheel	6	7.5
Allowed Wheel	6.75	6.75 / 7.5
Max Load Single (LBS)	4,940@130	6,005@130
Max Load Dual (LBS)	4,675@130	5,675@130
Max Pressure (PSI)	130/130	130/130
Tread Depth (32nds)	16	16
Weight (LBS)	68	70

PR Ply Rating LR Load Range LI Load Index SR Speed Rating

Specifications and availability subject to change without notice.

The **GT Radial GTR955** is a durable new shallow tread TRAILER tire built to minimize irregular wear and offer excellent retreadability, designed for cross regional applications.

Retreadable, with warranty.
Affordable performance.

FEATURES / BENEFITS

Four Streamlined Circumferential Ribs

Balanced distribution of contact pressure for consistent treadwear

Three Longitudinal Groove Design

Efficient water evacuation for enhanced wet traction

Shallow Tread Depth

16/32nds tread depth to minimize irregular treadwear

Specialized Tread Compound

Improved tread wear resistance and handling characteristics



CROSS URBAN

Designed for mixed Regional and Urban operations,
including light Mixed Service and Off Road applications.

▶ COMBINED USAGE WITH MODERATE REGIONAL HAUL AND URBAN APPLICATIONS COMBINES PRODUCT PERFORMANCE AND APPLICATION VERSATILITY

▶ 70-80% ON URBAN OPERATIONS, 20-30% ON REGIONAL ROADS

GSR139

CROSS URBAN ALL POSITION



Cross Urban



All Position

72_{MO}

Limited Warranty*



All Position

*See GTRadialCommercial.com for details



Tire Size	225/70R19.5	245/70R19.5
Item Code	EV99873G	EV99898G
PR	14	16
LR	G	H
LI/SR	128/126 M	136/134 M
Approved Wheel	6.75	7.5
Allowed Wheel	6	6.75
Max Load Single (LBS)	3,970@110	4,940@120
Max Load Dual (LBS)	3,750@110	4,675@120
Max Pressure (PSI)	110/110	120/120
Tread Depth (32nds)	17	18
Weight (LBS)	63	74

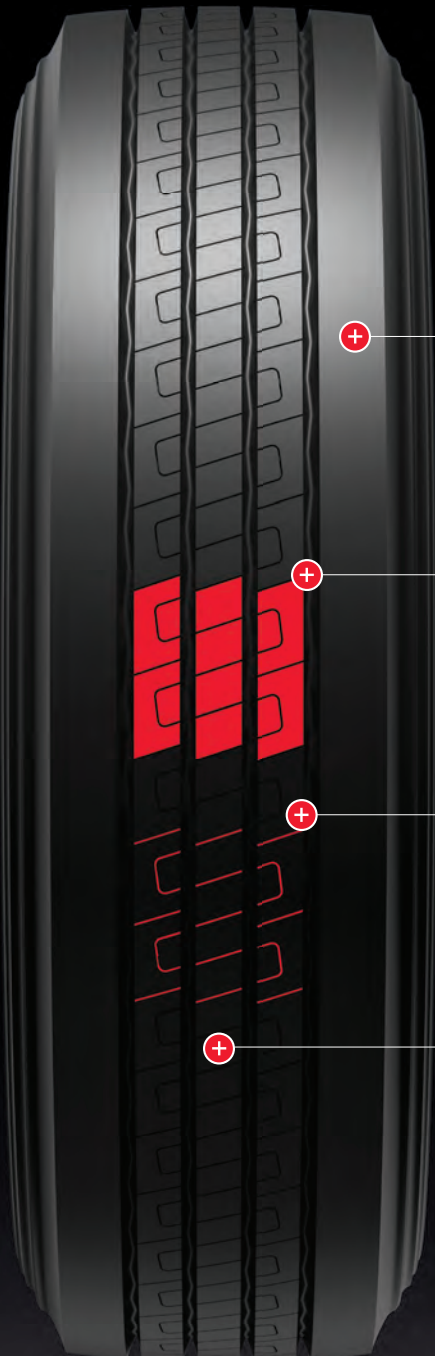
PR Ply Rating LR Load Range LI Load Index SR Speed Rating

Specifications and availability subject to change without notice.

The **GT Radial GSR139** is a versatile new solid shoulder ALL POSITION tire, featuring tread compound design engineered to be tough enough for local streets and light mixed service, delivering long wear and performance.

Retreadable, with warranty.
Affordable performance.

FEATURES / BENEFITS



Solid Shoulder

Increased shoulder rigidity for improved handling

Three Rib Design

Effectively prevents stone retention and drilling

Diagonal Sipe Design

Excellent handling and maneuverability

Special Equal Rib Distribution Compound

Increased tread scrub resistance

GAM535

CROSS URBAN ALL POSITION



Cross Urban



All Position



Cut+Chip Resistant



All Position

72Mo

Limited Warranty*



Tire Size	11R22.5	315/80R22.5	11R24.5
Item Code	EV999206	EV999875G	EV999196
PR	16	22	16
LR	H	M	H
LI/SR	146/143 L	161/157K	149/146
Approved Wheel	8.25	9.0	8.25
Allowed Wheel	7.5	9.75	7.5
Max Load Single (LBS)	6,610@120	10,200@130	7,160@120
Max Load Dual (LBS)	6,005@120	9,090@130	6,610@120
Max Pressure (PSI)	120/120	130/130	120/120
Tread Depth (32nds)	24	23	24
Weight (LBS)	122	153	132

PR Ply Rating LR Load Range LI Load Index SR Speed Rating

Specifications and availability subject to change without notice.

The **GT Radial GAM535** is a versatile new ALL POSITION tire engineered for enhanced traction and durability. With a tough cut & chip resistant compound, the **GAM535** is designed for urban or mixed service applications.

Retreadable, with warranty.
Affordable performance.

FEATURES / BENEFITS



Optimized Lug Pattern

Excellent traction and maneuverability

Special Cut & Chip Resistant Compound

Superior resistance to cutting and tearing

Deep Three ZigZag Grooves with Y-Design

Increased traction with reduced stone retention

Long Life Tread Compound

Wear resistant to ensure a long tread life

*See GTRadialCommercial.com for details

GT Radial manufactures SmartWay Verified Technologies.
Learn more at epa.gov/smartway.

GT Radial reserves the right to change construction, materials or specifications without notice or obligation.

GAM876

CROSS URBAN ALL POSITION



Cross Urban



All Position



Cut+Chip Resistant



All Position

72Mo

Limited Warranty*



Tire Size	385/65R22.5	425/65R22.5
Item Code	EV99886G	EV99885G
PR	18	20
LR	J	L
LI/SR	160/- K	165/- K
Approved Wheel	11.75	12.25
Allowed Wheel	12.25	11.75 / 12.25 / 13 / 14
Max Load Single (LBS)	9,920@130	11,400@120
Max Load Dual (LBS)	-	-
Max Pressure (PSI)	130/-	120/-
Tread Depth (32nds)	22	23
Weight (LBS)	166	201

PR Ply Rating LR Load Range LI Load Index SR Speed Rating
Specifications and availability subject to change without notice.

The **GT Radial GAM876** is a tough new ALL POSITION tire with wide, aggressive tread for traction and flotation. With a rugged cut & chip resistant compound, **GAM876** is designed for durability and retreadability for local pickup/delivery and light mixed service applications.

Retreadable, with warranty.
Affordable performance.



FEATURES / BENEFITS

Aggressive Tread Pattern

Consistent traction on any surface

Special Cut & Chip Resistant Compound

Superior resistance to cutting and tearing

Wide Footprint

Excellent flotation in soft terrains

Enhanced Casing Construction

Robust casing technology to maximizes durability and retreadability

*See GTRadialCommercial.com for details

GT Radial manufactures SmartWay Verified Technologies. Learn more at epa.gov/smartway.

GT Radial reserves the right to change construction, materials or specifications without notice or obligation.

GDR339

CROSS URBAN DRIVE



Cross Urban



Drive Position

72_{Mo}

Limited Warranty*



Drive Position

*See GTRadialCommercial.com for details



Tire Size	225/70R19.5	245/70R19.5
Item Code	EV99872G	EV99897G
PR	14	16
LR	G	H
LI/SR	128/126 M	136/134 M
Approved Wheel	6.75	7.5
Allowed Wheel	6	6.75
Max Load Single (LBS)	3,970@110	4,940@120
Max Load Dual (LBS)	3,750@110	4,675@120
Max Pressure (PSI)	110/110	120/120
Tread Depth (32nds)	17	18
Weight (LBS)	66	76

PR Ply Rating LR Load Range LI Load Index SR Speed Rating

Specifications and availability subject to change without notice.

The **GT Radial GDR339** is an all new **DRIVE** tire, with an aggressive tread designed to deliver traction in a variety of conditions. GDR339 is tough enough for local streets and light mixed service, delivering long wear and performance.

Retreadable, with warranty.
Affordable performance.

GT Radial reserves the right to change construction, materials or specifications without notice or obligation.



FEATURES / BENEFITS

Optimized Footprint & Casing Design

Even, consistent wear throughout tire life

Diagonal interlocking Block/Lug Design

Consistent traction in virtually all operating conditions

Wide Tapered Grooves

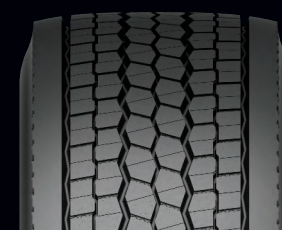
Effectively prevents stone retention and drilling

Unique Lug Pattern Design

Enhanced wet traction and self-cleaning capability



It's all about that base.



GDL633 FS
Ultra Wide Drive



GTL933 FS
Ultra Wide Trailer

Giti Ultra Wide Base Tires

GDL633 FS



SmartWay Verified Ultra Wide Base Drive Tire

Features	Benefits
Ultra wide base with special tread compound	Reduced rolling resistance for improved fuel economy and lower operating cost
Special sipes design	Even contact pressure to minimize irregular wear
Rugged lug pattern design	Excellent drive performance and traction, with improved vehicle stability for driver confidence
Seven circumferential groove design	Efficient water evacuation for excellent wet traction

Tire Size	Item Code	PR	LR	LI/SR	Approved Wheel	Allowed Wheel	Max Load Single	Max Load Dual	Section Width	Static Loaded Radius	Overall Diameter	Tread Depth	RPM	Weight
					Inch	Inch	(Lbs.@ PSI)	(Lbs.@ PSI)	Inch	Inch	Inch	32nds		Lbs.
445/50R22.5	100EV1282Q	20	L	161L	14.00	15.00	10,200@120	—	17.5	18.6	40.1	23	518	188

PR Ply Rating LR Load Range LI Load Index SR Speed Rating RPM Revolutions Per Mile

Tire Size	Pattern	PR	Use	Tire Load Limits at Various Cold Inflation Pressures					(Pressure Listed is the Minimum for the Load)					Recommended Load & Inflation			Tires mounted on 15° drop center rims		
				psi	65	70	75	80	85	90	95	100	105	110	115	120	123	125	130
445/50R22.5	GDL633 FS, GTL933 FS	20	DUAL	kg															
				lbs															
			SINGLE	kg	2800	2980	3150	3320	3480	3640	3810	3970	4120	4250 (J) 158	4430	4625 (L) 161			
				lbs	6175	6570	6940	7310	7680	8030	8390	8740	9090	9370 (J)	9780	10200 (L)			

Giti manufactures SmartWay Verified Technologies. Learn more at epa.gov/smartway. Product details given for information only. Giti reserves the right to modify details of products and services at any time and without notice.



GTL933 FS



SmartWay Verified Ultra Wide Base Trailer Tire

Features	Benefits
Ultra wide base with special tread compound	Reduced rolling resistance for improved fuel economy and lower operating cost
Optimized sipe design on rib edges	Minimized irregular wear
Wide tread design with consistent contact patch pressure	Excellent treadwear performance
Enhanced tread groove design	Effectively minimizes stone retention

Tire Size	Item Code	PR	LR	LI/SR	Approved Wheel	Allowed Wheel	Max Load Single	Max Load Dual	Section Width	Static Loaded Radius	Overall Diameter	Tread Depth	RPM	Weight
					Inch	Inch	(Lbs.@ PSI)	(Lbs.@ PSI)	Inch	Inch	Inch	32nds		Lbs.
445/50R22.5	100EV1281Q	20	L	161L	14.00	15.00	10,200@120	—	17.5	—	40.1	14	—	167

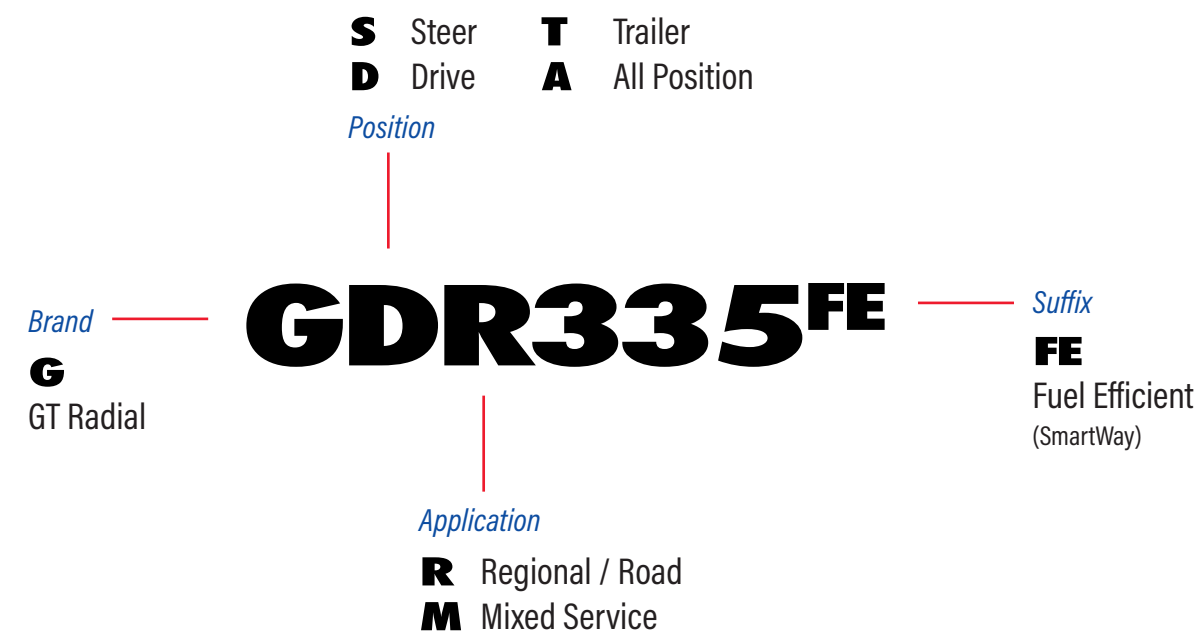
PR Ply Rating LR Load Range LI Load Index SR Speed Rating RPM Revolutions Per Mile

Giti manufactures SmartWay Verified Technologies. Learn more at epa.gov/smartway. Product details given for information only. Giti reserves the right to modify details of products and services at any time and without notice.





Product Nomenclature

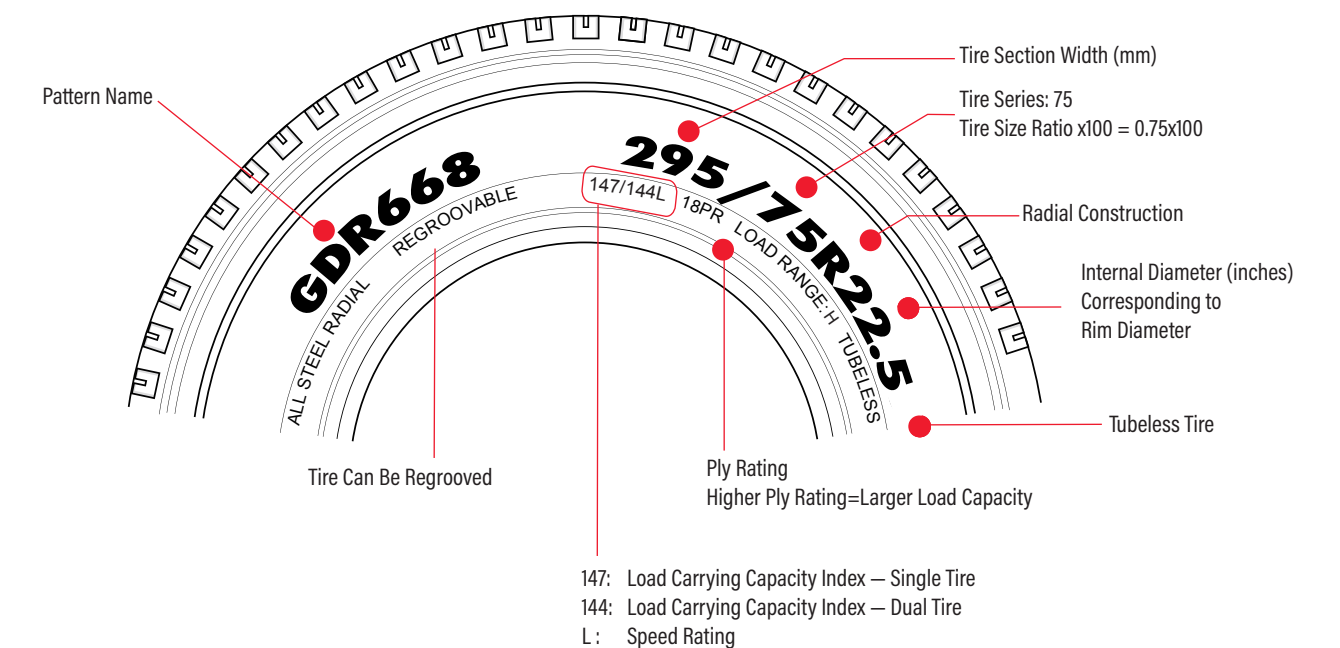


TECHNICAL DATA & RESOURCES

- ▶ PRODUCT NOMENCLATURE
- ▶ DESIGNATIONS, LOAD AND SPEED INDEX
- ▶ TIRE PRESSURE MANAGEMENT
- ▶ RECOMMENDED LOAD & INFLATION
- ▶ WARRANTIES



Designations, Load Index & Speed Rating



Load Range

LOAD RANGE	PLY RATING
C	6
D	8
E	10
F	12
G	14
H	16
J	18
L	20
M	22

Speed Rating

SR	MPH
B	31
C	37
D	40
E	43
F	50
G	56
J	62
K	68
L	75
M	81

Load Capacity Index

LI	LBS	LI	LBS	LI	LBS
115	2,680	136	4,940	157	9,090
116	2,755	137	5,070	158	9,370
117	2,835	138	5,205	159	9,650
118	2,910	139	5,355	160	9,920
119	3,000	140	5,510	161	10,200
120	3,085	141	5,675	162	10,500
121	3,195	142	5,840	163	10,700
122	3,305	143	6,005	164	11,000
123	3,415	144	6,175	165	11,400
124	3,525	145	6,395	166	11,700
125	3,640	146	6,610	167	12,000
126	3,750	147	6,780	168	12,300
127	3,860	148	6,940	169	12,800
128	3,970	149	7,160	170	13,200
129	4,080	150	7,390	171	13,600
130	4,190	151	7,610	172	13,900
131	4,300	152	7,830	173	14,300
132	4,410	153	8,050	174	14,800
133	4,540	154	8,270	175	15,200
134	4,675	155	8,540	176	15,700
135	4,805	156	8,820	177	16,100



Before fitting, it is essential to check the different markings to ensure that the tires meet the maximum load and speed requirements.

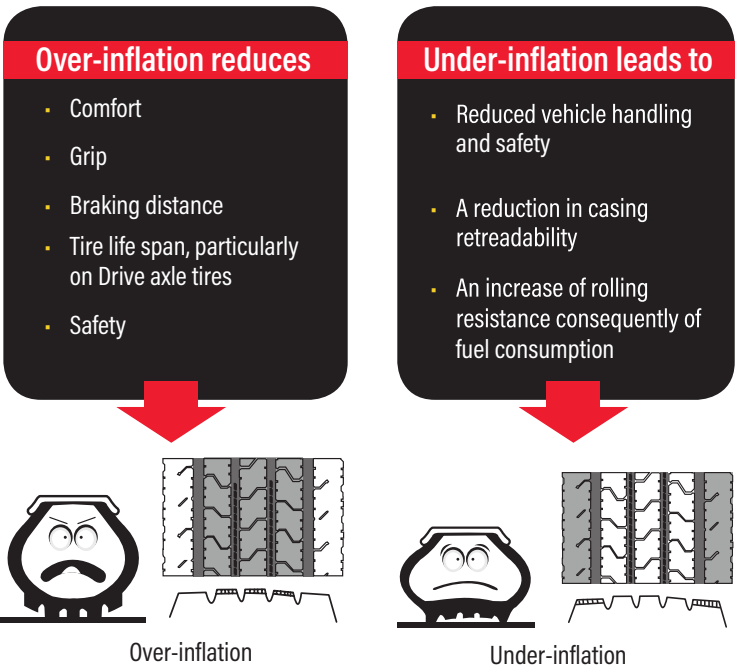
Tire Pressure Management

Inflation Pressure Recommendation

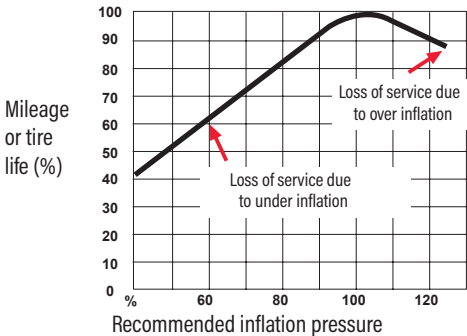


SAFETY

Important instructions for safe inflation



Effect of inflation pressure on tire life



ADVICE BEFORE INFLATION

- 1 Weigh your vehicle and its load, axle by axle, to determine tire pressure.
- 2 Measure the pressure when cold (when the vehicle has been stationary for several hours); pressures must be checked at regular intervals and during each service.
- 3 Important safety instruction: pressure increases when the vehicle is in motion, never reduce the pressure of a hot tire.
- 4 Pressure gauges: must be accurate, handled with care and calibrated regularly.

INFLATION METHOD



- With inflation cage**
- Place the tire vertically in the inflation cage
 - Read the cage user manual



- Without inflation cage**
- Step 1**
- Pre-inflate tire up to 1.5 bars. and STOP
 - Check the tire. If in doubt, stop and call an expert.
- Step 2**
- Inflate up to the appropriate pressure.
 - During inflation, stand in line with the tire tread three meters away



Caution:

Driving with insufficient pressure can damage your tires. After having Driven with an underinflated tire, do not re-inflate tires: have your tires fully checked by an expert.

Recommended Load & Inflation

RADIAL PLY TIRES FOR TRUCKS, BUSES AND TRAILERS USED IN NORMAL HIGHWAY SERVICE.
TIRES MOUNTED ON 15° DROP CENTER RIMS

	Tire Size Designation	Pattern	PR	Use	Tire Load Limits at Various Cold Inflation Pressures (Pressure Listed is the Minimum for the Load)														
					psi	65	70	75	80	85	90	95	100	105	110	115	120	125	130
17.5	215/75R17.5	GTR955	16	DUAL	kg							1650	1720	1790	1860	1910	1990	2060	2120(H)134
					lbs							3645	3795	3945	4095	4220	4390	4540	4675(H)
				SINGLE	kg							1750	1820	1900	1960	2040	2110	2180	2240(H)136
					lbs							3860	4010	4180	4330	4500	4650	4805	4940(H)
	235/75R17.5	GTR955	16	DUAL	kg							2165	2235	2305	2375	2435	2505	2545	2575(H)141
					lbs							4772	4926	5089	5235	5367	5521	5610	5675(H)
				SINGLE	kg							2315	2385	2455	2525	2585	2655	2692	2725(H)143
					lbs							5102	5257	5411	5565	5697	5852	5935	6005(H)
19.5	225/70R19.5	GSR139, GDR339	14	DUAL	kg	1180	1230	1300	1360	1410	1470	1550(F)123	1580	1640	1700(G)126	1750	1800(H)128		
					lbs	2600	2720	2860	3000	3115	3245	3415(F)	3490	3615	3750(G)	3855	3970(H)		
				SINGLE	kg	1250	1310	1380	1450	1500	1570	1650(F)125	1690	1740	1800(G)128	1860	1900(H)130		
					lbs	2755	2895	3040	3195	3315	3450	3640(F)	3715	3845	3970(G)	4100	4190(H)		
	245/70R19.5	GSR139, GDR339	16	DUAL	kg														
					lbs	1320	1390	1460	1550	1590	1660	1750(F)127	1790	1850	1950(G)131	1970	2120(H)134		
				SINGLE	kg	2910	3070	3220	3415	3515	3655	3860(F)	3940	4075	4300(G)	4345	4675(H)		
					lbs	1400	1480	1550	1650	1700	1770	1850(F)129	1900	1970	2060(G)133	2095	2240(H)136		
22.5	11R22.5	GSR135FE, GDR335FE, GDR688, GDR750FE, GAM535	16	DUAL	kg		1990	2080	2160	2250	2360(F)138	2460	2560	2650(G)142	2680	2710	2725(H)143		
					lbs		4380	4580	4760	4950	5205(F)	5415	5625	5840(G)	5895	5950	6005(H)		
				SINGLE	kg		2050	2160	2260	2370	2500(F)140	2600	2700	2800(G)144	2870	2940	3000(H)146		
					lbs		4530	4770	4990	5220	5510(F)	5730	5950	6175(G)	6320	6465	6610(H)		
	315/80R22.5	GAM535	22	DUAL	kg						2650	2750	2900	2970	3070	3150	3270	3940	4125(M)157
					lbs						5840	6070	6395	6540	6770	6940	7210	8680	9090(M)
				SINGLE	kg						2910	3030	3150	3260	3370	3450	3590	4330	4625(M)161
					lbs						6415	6670	6940	7190	7440	7610	7920	9545	10200(M)
	295/75R22.5	GSR135FE, GDR335FE, GDR688, GDR750FE	16	DUAL	kg		1860	1950	2060	2130	2220	2300(F)137	2390	2470	2575(G)141	2630	2725(H)143		
					lbs		4095	4300	4540	4690	4885	5070(F)	5260	5440	5675(G)	5795	6005(H)		
				SINGLE	kg		2040	2140	2240	2340	2440	2500(F)140	2620	2710	2800(G)144	2890	3000(H)146		
					lbs		4500	4725	4940	5155	5370	5510(F)	5780	5980	6175(G)	6370	6610(H)		
	255/70R22.5	GSR135FE, GDR335FE, GDR750FE	16	DUAL	kg	1550	1630	1710	1800	1860	1940	2000	2020	2090	2120(G)134	2230	2300(H)137		
					lbs	3415	3585	3765	3970	4110	4275	4410	4455	4610	4675G	4915	5070(H)		
				SINGLE	kg	1650	1730	1820	1900	1980	2060	2120	2220	2300	2360(G)138	2450	2500(H)140		
					lbs	3640	3815	4005	4190	4370	4550	4675	4895	5065	5205(G)	5400	5510(H)		
	385/65R22.5	GAM876	18	DUAL	kg														
					lbs														
				SINGLE	kg		2880	3060	3150	3350	3470	3650	3740	3850	4000	4100	4250(J)158	4340	4500(L)160
					lbs		6380	6720	6940	7350	7650	8050	8230	8510	8820	9050	9370(J)	9570	9920(L)
	425/65R22.5	GAM876	20	DUAL	kg														
					lbs														
				SINGLE	kg	3430	3430	3640	3750	3980	4130	4250	4440	4580	4750	4880	5150(L)165	5475	5800(M)169
					lbs	7560	7590	7990	8270	8740	9100	9370	9790	10100	10500	10700	11400(L)	12100	12800(M)
24.5	11R24.5	GSR135FE, GDR335FE, GDR688, GDR750FE, GAM535	14	DUAL	kg		2110	2210	2300	2390	2500(F)140	2580	2660	2725(G)143	2820	2910	3000(H)146		
					lbs		4660	4870	5070	5260	5510(F)	5675	5840	6005(G)	6205	6405	6610(H)		
				SINGLE	kg		2190	2300	2410	2520	2650(F)142	2770	2890	3000(G)146	3080	3160	3250(H)149		
					lbs		4820	5070	5310	5550	5840(F)	6095	6350	6610(G)	6790	6970	7160(H)		
	285/75R24.5	GSR135FE, GDR335FE, GDR688	16	DUAL	kg			1970	2060	2150	2240	2360(F)138	2410	2490	2575(G)141	2660	2800(H)144		
					lbs			4340	4540	4740	4930	5205(F)	5310	5495	5675(G)	5860	6175(H)		
				SINGLE	kg			2160	2240	2360	2460	2575(F)141	2650	2740	2800(G)144	2920	3075(H)147		
					lbs			4770	4940	4940	5210	5675(F)	5835	6040	6175(G)	6440	6780(H)		

Limited Warranty

Effective January 1, 2017

1.1 Eligibility

This Limited Warranty Policy and Procedures applies to any new GT Radial Commercial Truck Tires, manufactured Giti Tire, that bear the corresponding D.O.T. serial number.

The eligible tire must be operated under normal service and used on the same vehicle on which they were originally installed according to the vehicle manufacturer's recommendations.

1.2 What is covered by the warranty and for how long?

Upon examination by GT Radial, any eligible Commercial (TBR) tire that becomes unusable for any reason that is within the manufacturer's control (see exclusions in section 1.3 "What it is Not Covered"), within 72 months from the date of tire manufacture and before wearing down to 2/32 inch (1.6 mm) of the remaining original tread depth, will be replaced with an equivalent new GT Radial product on the basis set forth in this Limited Warranty.

GT Radial products adjusted under this Limited Warranty due to a substantiated condition related to materials and/or workmanship up to the first 2/32" of the original tread depth, will be replaced free of charge (Federal Excise Tax included). The cost of mounting and balancing and other service charges, disposal fees, or applicable taxes are payable by the customer.

GT Radial products adjusted under this Limited Warranty due to a substantiated condition related to materials and/or workmanship that are worn beyond the first 2/32" of the original usable tread will be replaced with an equivalent new GT Radial product on a pro rata basis. The cost of mounting, balancing, full Federal Excise Tax, and other service charges, disposal fees, or applicable taxes are payable by the customer.

1.3 What is not covered?

This limited warranty does not apply to tires which become unserviceable due to:

- Road hazard injury (e.g., a cut, snag, bruise, impact damage or puncture);
- Improper use or operation, including: improper inflation pressure, overloading, curbing, use of improper rim or wheel, improper mounting or demounting, tire/wheel spinning, misuse, misapplication, negligence, tire alteration or use in competition or racing;
- Improper maintenance of tire, wheel or vehicle components: misalignment, imbalance, worn components, or other vehicle conditions, characteristics or defects;
- Highway tires that are operated on in an off highway applications;
- Tires subjected to severe under-inflation or run-flat conditions;
- Tires deemed unretreadable due to excessive tread wear or improper buffing;
- Improperly retreaded tire including inadequate inspection, preparation, material, equipment, repair, etc.;
- Improperly repaired tire;
- Improper regrooving
- Uneven or rapid wear which is caused by mechanical irregularity in the vehicle such as wheel misalignment, (measured tread difference of 2/32" or more across the tread on the same tire);
- Accident, fire, chemical corrosion, tire alteration or vandalism;
- Flat spotting caused by improper storage or brake lock;
- Contamination or degradation by petroleum products or other chemicals, solid or gaseous materials other than air, nitrogen or carbon dioxide (for example, water based sealers or balancing substances);
- Ozone or weather checking after four years from date of tire manufacture;
- With the serial number buffed or cut;
- Purchased or used outside the United States or Canada;
- With less than 2/32nds of an inch remaining tread in any groove;
- With a ride complaint that occurs after the first 2/32nds of tread wear;
- Damaged through use of any tube or flap

1.4 Owner's Obligation

To make an eligible claim under this Limited Warranty Policy and Procedures, the owner must present a claim with the tire to an Authorized Dealer of GT Radial products. Owner must present an original tire sales invoice indicating the date of purchase. Owner will be required to sign the GT Radial Warranty Claim Application Form or dealer replacement sales receipt.

Owner is responsible for paying all applicable taxes set forth under this Limited Warranty Policy and Procedures. Owner is also responsible for paying local tire-disposal fees and any parts or service regardless of mileage or months of service. This includes payment for tire rotation, alignment, towing, road service, valve stems and tire repairs. Owner is responsible for maintaining proper tire air pressure and for proper maintenance of the tire.

2.0 Tire Registration

The registration of GT Radial brand tires is an important safety precaution required by law. Registration will allow GT Radial to notify the owner in the unlikely event of a product return program. GT Radial authorized dealers will provide a tire registration card in order to record the D.O.T. tire identification number, along with the dealer's name and address. Owner is required to fill in his or her name and address and mail to the address printed on the card or make the tire registration online (www.gtradial-us.com/customer-information/tire-registration/).

3.0 Adjustment Procedures

- 3.1

General Guidelines
- 3.1.1

Customers must use the Claim Application Form provided by GT Radial for adjustments to be considered for credit. The Claim Application form must be filled in completely.
- 3.1.2

Adjustment credits will be based on GT Radial current selling prices to Distributor at the time of the claim.
- 3.1.3

Customer must send the completed Warranty Claim form with attached DOT Serial Number cut-outs and clear pictures showing the claimed condition to:

Giti Tire (USA), Ltd.

Technical Service Department

10404 Sixth Street

Rancho Cucamonga, CA 91730

Phone: 1-909-980-0968 / Fax: 909-476-4028

e-mail: techservice@us.giti.com
- 3.1.4

Upon receipt of any adjustment claims, GT Radial, at its discretion, may elect to do the following:

a.

Ask the tires to be shipped to one of our adjustment locations at our expense for inspection. Shipping instructions will be provided if this option is used.

b.

Send a Service Engineer from our company for a direct inspection of the tires at your location. In that case, the Service Engineer will determine if the tire is adjustable or not; if so, he will make the adjustment at your location, will cut out the DOT serial number and will destroy the tire. After such visit, you will still complete and forward the Warranty Claim forms with all requested information and the DOT serial cut-outs attached.

c.

If our service engineer is unable to visit your location, the claim will be processed from the paperwork received.

d.

If the tire was found adjustable you will be notified, will receive the credit and afterwards you must destroy the tire.

Limited Warranty

- e.

If the tire is found not adjustable you will receive a letter with an explanation. At your request, non-adjustable tires may be returned at your expense within 30 days of notification. GT Radial will not be responsible for tires left at our location after 30 days of such notification.
- f.

Do not dispose of the tires until you have received your credit.
- g.

IMPORTANT: Any form that is illegible, incomplete, with no clear picture of the alleged defect, without complete DOT cut-out might be returned to you for completion and will delay the payment process. Photocopies will not be acceptable.

Disclaimer

No other warranties are expressed or implied. Without limiting the generality of the foregoing, GITI Tire (USA), Ltd. hereby expressly disclaims warranties of title, merchantability, fitness for a particular purpose and non-infringement. GITI Tire (USA), Ltd. or the manufacturer is not responsible for loss of time, inconvenience, loss of use of a vehicle or any other consequential damages or expenses. Some states do not allow these exclusions or limitations of incidental or consequential damages; therefore, the above limitations or exclusions may not apply to you.

Any implied warranties, including warranties of merchantability and fitness for a particular use, shall be limited in duration to the above period. To the extent permitted by law, GITI shall not be responsible incidental or consequential damages, such as loss of use of the tire or of the vehicle on which it is used, inconvenience or commercial loss.

This is the only expressed warranty applicable to GT Radial Commercial Truck Tires and supersedes the terms of any previous warranty. GITI neither assumes nor authorizes anyone to assume for it any warranty.

Limited Casing Warranty

1.

The casings of GT Radial Commercial Truck Tires are warranted when the tire becomes unserviceable due to factors within manufacturer’s control.
2.

The following casing allowance will be applied to GT Radial Commercial Truck Tires in normal over the road service and produced after January 1, 2017.

SIZE	1st RETREAD	2nd RETREAD
445/50R22.5	\$130.00	\$100.00
295/75R22.5, 11R22.5	\$80.00	\$70.00
285/75R24.5, 11R24.5	\$80.00	\$70.00
385/65R22.5, 425/65R22.5	\$80.00	\$70.00
315/80R22.5	\$80.00	\$70.00
255/70R22.5	\$65.00	\$50.00
225/70R19.5, 245/70R19.5	\$30.00	\$20.00
215/75R17.5, 235/75R17.5	\$30.00	\$20.00

3.

The above Casing Warranty will be valid through the second (2nd) retread for 72 months from the date of manufacture, whichever comes first.
4.

Tires used in mining and logging service are not covered under this warranty.
5.

The Limited Casing Warranty is subject to the terms and conditions as set forth by GITI Tire (USA), Ltd.

Exclusions for Casing Warranty

- a.

Casings which can not be retreaded due to excessive tread wear.
- b.

Casings that have already been retreaded more than twice.
- c.

Casing presented for warranty adjustment more than 6 years after the manufacturing date, based on tire DOT serial number.
- d.

Failures resulting from faulty or incorrect retread processing or materials.
- e.

Tires which have the original DOT or retreader’s DOT numbers removed or are rendered illegible.
- f.

Costs of retreading services or materials are specifically excluded.

Disclaimer

Any implied warranties, including warranties of merchantability and fitness for a particular use, shall be limited in duration to the above period. To the extent permitted by law GITI shall not be responsible incidental or consequential damages, such as loss of use of the tire or of the vehicle on which it is used, inconvenience or commercial loss.

TThis is the only expressed warranty applicable to GT Radial Commercial Truck Tires and supersedes the terms of any previous warranty. GITI neither assumes nor authorizes anyone to assume for it any warranty..

2023



[GTRADIALCOMMERCIAL.COM](https://gtracialcommercial.com)

[contact@ gtracialcommercial.com](mailto:contact@gtracialcommercial.com)

5144041-01-23