

GDR668

CROSS REGIONAL DRIVE



Cross Regional



Drive Position

72Mo

Limited Warranty*

*See GTRadialCommercial.com for details

Tire Size	11R22.5	295/75R22.5	11R24.5	285/75R24.5
Item Code	EV99933G	EV91199G	EV99926G	EV99882G
PR	16	16	16	16
LR	H	H	H	H
LI/SR	146/143 L	148/143 L	149/146 L	147/144 L
Approved Wheel	8.25	9	8.25	8.25
Allowed Wheel	7.5	8.25	7.5	9
Max Load Single (LBS)	6,610@120	6,610@120	7,160@120	6,780@120
Max Load Dual (LBS)	6,005@120	6,005@120	6,610@120	6,175@120
Max Pressure (PSI)	120/120	120/120	120/120	120/120
Tread Depth (32nds)	28	28	28	28
Weight (LBS)	121	122	130	127

PR Ply Rating LR Load Range LI Load Index SR Speed Rating

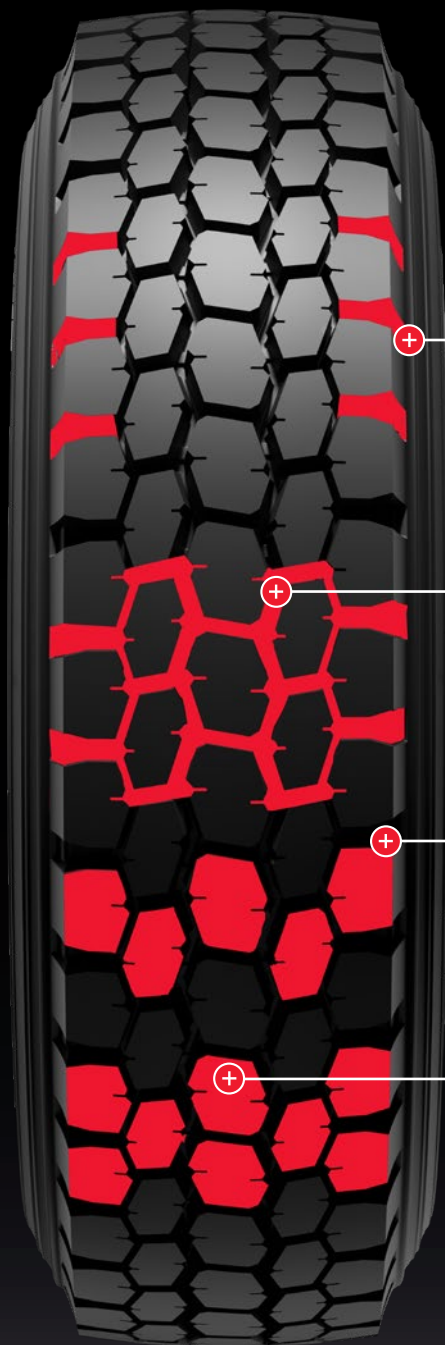
Specifications and availability subject to change without notice.



The **GT Radial GDR668** is an all new open shoulder DRIVE tire from Giti Tire, developed to minimize irregular wear and offer excellent retreadability, and designed for regional or long haul applications.

Retreadable, with warranty.
Affordable performance.

GTRADIALCOMMERCIAL.COM



FEATURES / BENEFITS

Open Shoulder Design

Excellent traction in wet and dry, with increased heat dissipation for endurance

Deep and Wide Tread Design

Reduced rolling resistance and heat generation, for improved fuel economy and wear resistance

Staggered Block and Lug Pattern

Effective and consistent traction and braking performance

Open Lug Design

Effectively prevents occurrence of "heel and toe" irregular wear