



GSR135FE

CROSS REGIONAL STEER / ALL POSITION

The **GT Radial GSR135^{FE}** is a “NOW generation” STEER / ALL POSITION tire from Giti Tire. A solid shoulder design with tread compounds super tough enough for local streets while delivering wear, fuel efficiency and cost per mile performance for longer hauls.

SmartWay verified. Retreadable, with warranty. Affordable performance.

Ready to work for you NOW!



Cross Regional



Steer / All Position



SmartWay Verified

72_{MO}

Limited Warranty*



Tire Size	295/75R22.5	11R22.5
Item Code	EV999176	EV999156
PR	16	16
LR	L	L
LI/SR	146/143	146/143
Approved Wheel	9	8.25
Allowed Wheel	8.25	7.5
Max Load Single (LBS)	6610	6940
Max Load Dual (LBS)	6005	6395
Max Pressure (PSI)	120/120	123/123
Tread Depth (32nds)	19	19
Weight (LBS)	111	113

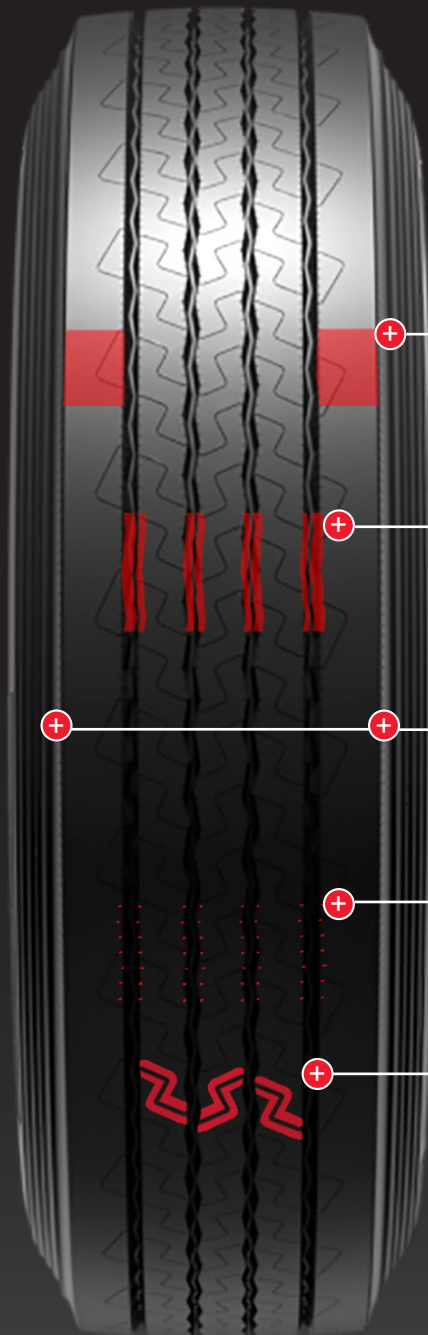
PR Ply Rating LR Load Range LI Load Index SR Speed Rating

Specifications and availability subject to change without notice.

*See GTRadialCommercial.com for details

Coming Soon 1st QTR 2021: 11R 24.5 16PR | 285/75R24.5 16PR | 255/70R22.5 16PR

FEATURES / BENEFITS



Wider Shoulder Ratio Design

Increased shoulder rigidity provides lateral force resistance for improved handling

Four Zigzag Longitudinal Groove Design

Excellent highway traction and driving stability

Optimized Tread Compound

High wear resistance and reduced rolling resistance

Treadblock Edge Sipes

Distribute and disperse road stress to help ensure uniform treadwear

"S" Section Sipes

Maximize tread edges for enhanced grip and wet performance

